



# BON•GAS

---

**VALVOLA DIRITTA**  
*STRAIGHT BALL VALVE*

**RUBINETTO DIRITTO**  
*STRAIGHT BALL COCK*

**RUBINETTO A SQUADRA**  
*ANGLED BALL COCK*

**RUBINETTO PER COLLEGAMENTO TUBO FLESSIBILE**  
*BALL COCK FOR FLEXIBLE HOSE*



## APPROVAZIONI INTERNAZIONALI

Le valvole a sfera **BON•GAS** sono approvate a norma EN 331. Le valvole a sfera **BON•GAS** hanno ottenuto approvazioni ufficiali per l'utilizzo con gas in vari paesi.

## INTERNATIONAL APPROVALS

The **BON•GAS** valves are approved to the EN 331 standard.

The **BON•GAS** valves gained official approvals in various countries for use with gas.

## FILETTATURE

Estremità filettate UNI EN 10226 (BSPT a richiesta).

## END CONNECTIONS

Screwed to UNI EN 10226 (BSPT on request).

## IMPIEGHI

Gas combustibili:

- gas di città (1<sup>a</sup> famiglia)
- gas metano (2<sup>a</sup> famiglia)
- gas liquidi (3<sup>a</sup> famiglia)

Le valvole a sfera **BON•GAS** sono anche adatte per l'uso con acqua calda e fredda, aria compressa, olii e idrocarburi in generale.

## USES

Fuel gas:

- town gas (1st family)
- natural gas (2nd family)
- L.P.G. gas (3rd family)

The **BON•GAS** ball valves are also suitable for hot and cold water, compressed air, oils and hydrocarbons in general.

## PRESSIONE DI ESERCIZIO

Per gas combustibili 5 MOP.

Per altri usi da PN 40 (1/2") a PN 16 (2").

Vedere diagramma pressione/temperatura.

## WORKING PRESSURE

For fuel gas 5 MOP.

For other uses from PN 40 (1/2") to PN 16 (size 2").

See pressure/temperature diagram.

## LIMITI DI TEMPERATURA

Per gas combustibili da -20°C a +60°C.

Per altri usi da -20°C a +100°C.

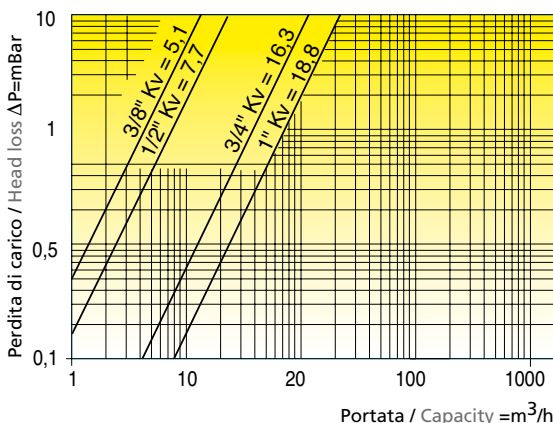
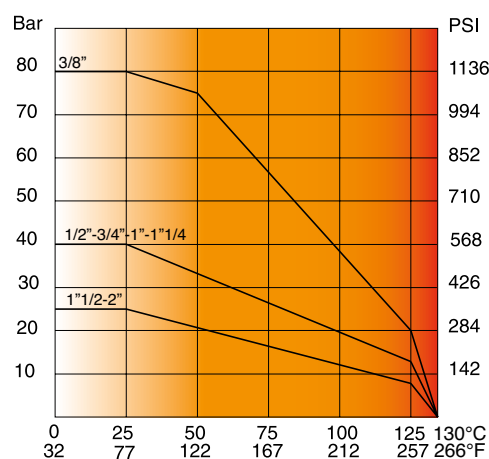
Vedere diagramma pressione/temperatura.

## TEMPERATURE LIMITS

For fuel gas from -20°C to +60°C.

For other uses from -20°C to +100°C.

See pressure/temperature diagram.



### Diagramma pressione/temperatura Art.G0327, G0328, G0329, G0330

(prova eseguita con acqua)  
per Art. G0231, G0232, G0237, G0238  
fare riferimento al diagramma pressione/  
temperatura della serie Atomic pag. 139

*Pressure/temperature diagram Art.G0327,  
G0328, G0329, G0330 (tested with water)  
for Art. G0231, G0232, G0237, G0238 refer  
to pressure/temperature diagram of Atomic  
series pag.139*

### Diagramma perdite di carico Art.G0327, G0328, G0329, G0330 (prova eseguita con aria)

per Art. G0231, G0232, G0237, G0238  
fare riferimento al diagramma perdite di carico  
della serie Top Gas pag. 33

*Head loss diagram Art.G0327, G0328, G0329,  
G0330 (tested with air)  
for Art. G0231, G0232, G0237, G0238 refer to  
head loss diagram of Top Gas series pag.33*

# BON•GAS

Valvola e rubinetto a sfera per gas combustibili  
Ball valve and cock for fuel gas

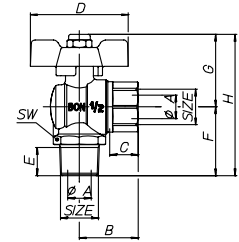
## Art. G.0362 BON•FLEX



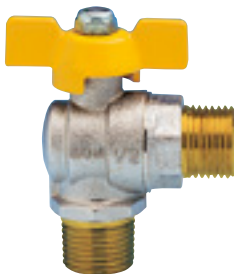
SIZE	$\frac{1}{2}'' \times \frac{1}{2}''$							
øA pass./bore	12,5							
B mm	31							
C mm	15							
D mm	52							
E mm	15							
F mm	36,5							
G mm	38,5							
H mm	75							
SW mm	26							

Rubinetto a sfera per gas combustibili a squadra, maschio/femmina con farfalla, per tubo flessibile, nichelato.

*Angled ball cock for fuel gas, male/female, with T-handle for flexible hose, nickel-plated.*



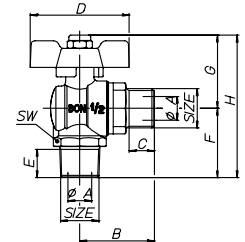
## Art. G.0363 BON•FLEX



SIZE	$\frac{1}{2}'' \times \frac{1}{2}''$							
øA pass./bore	12,5							
B mm	39,15							
C mm	13,2							
D mm	52							
E mm	15							
F mm	36,5							
G mm	38,5							
H mm	75							
SW mm	26							

Rubinetto a sfera per gas combustibili a squadra, maschio/maschio con farfalla, per tubo flessibile, nichelato.

*Angled ball valve for fuel gas, male/male, with T-handle for flexible hose, nickel-plated.*



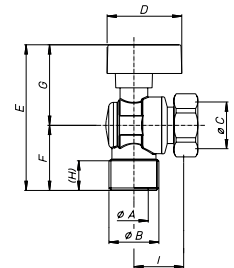
## Art. G.0386 BON•GAS



SIZE	$\frac{1}{2}'' \times \frac{1}{2}''$	$\frac{3}{4}'' \times \frac{3}{4}''$						
ø A mm	12,5	15						
øB	$\frac{1}{2}''$	$\frac{3}{4}''$						
øC	$\frac{1}{2}''$	$\frac{3}{4}''$						
D mm	44	44						
E mm	68,5	74						
F mm	30	34						
G mm	38,5	40						
H mm	12	14,5						
I mm	26	26						

Rubinetto a sfera per gas combustibili a squadra, maschio/girello **per caldaia** con levetta in alluminio plastificata gialla.

*Angled ball cock for fuel gas, male/nut for boiler, with yellow plastic coated aluminium lever.*



## Art. G.0387



SIZE	$\frac{1}{2}'' \times \frac{1}{2}''$	$\frac{3}{4}'' \times \frac{3}{4}''$						
ø A mm	12,5	15						
øB	$\frac{1}{2}''$	$\frac{3}{4}''$						
øC	$\frac{1}{2}''$	$\frac{3}{4}''$						
D mm	44	44						
E mm	68,5	74						
F mm	30	34						
G mm	38,5	40						
H mm	12	14,5						
I mm	26	26						

Rubinetto a sfera **per acqua** a squadra, maschio/girello **per caldaia**, con levetta in alluminio.

*Angled ball cock for water, male/nut for boiler, with black plastic coated aluminium lever.*

