



BASIC

VALVOLA SERIE UNIVERSALE
BALL VALVE UNIVERSAL SERIES

VALVOLA CON BOCCHETTONE
BALL VALVE TAIL & NUT

MINI PUMP
MINI PUMP

VALVOLA CON PROLUNGA
BALL VALVE WITH EXTENSION

VALVOLA CON SERRATURA
LOCKABLE BALL VALVE



eurofins
ACS



EAC



CARATTERISTICHE

Serie standard, passaggio totale, filetti corti.
Tenuta perfetta a bassa e alta pressione.
Lunga durata senza manutenzione.

CHARACTERISTICS

Standard series, full bore, short threads.
Perfect tightness at low and high pressure.
Long life with no maintenance.

FILETTATURE

Estremità filettate UNI ISO 228/1.

END CONNECTIONS

Threaded ends UNI ISO 228/1.

IMPIEGHI

Le valvole a sfera **BASIC** sono adatte per l'uso con acqua calda e fredda, aria compressa, olii e idrocarburi in generale.
Per utilizzi speciali vedere le tabelle di compatibilità chimica.

USES

The **BASIC** ball valves are suitable for hot and cold water, compressed air, oils and hydrocarbons in general.
For special uses please see the chemical resistance tables.

PRESSIONE DI ESERCIZIO

Da PN 80 (1/4") a PN 16 (4").
Vedere diagramma pressione/temperatura.

WORKING PRESSURE

From PN 80 (size 1/4") to PN 16 (size 4").
See pressure/temperature diagram.

LIMITI DI TEMPERATURA

Da -20°C a +140°C.
Vedere diagramma pressione/temperatura.

TEMPERATURE LIMITS

From -20°C to +140°C.
See pressure/temperature diagram.

NOTE

In accordo alla UNI EN 13828 in presenza di acque aggressive per la lega di ottone, in ottemperanza alla UNI EN ISO 6509, è necessario l'utilizzo della lega di ottone antidezincificante. La produzione è disponibile su richiesta.

NOTE

According to UNI EN 13828 in presence of water which could be aggressive for brass alloy, as agree with UNI EN ISO 6509 standard, is necessary the DZR brass alloy. The manufacture is available on request.

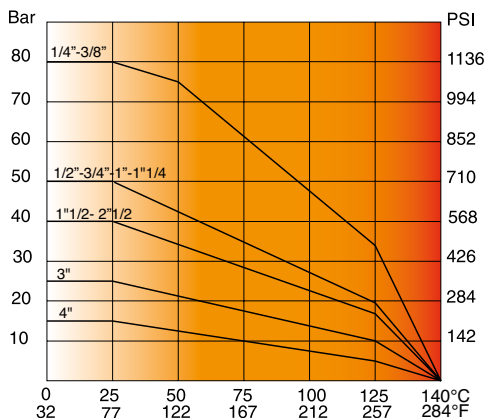


Diagramma pressione/temperatura
(prova eseguita con acqua)
Pressure/temperature diagram
(tested with water)

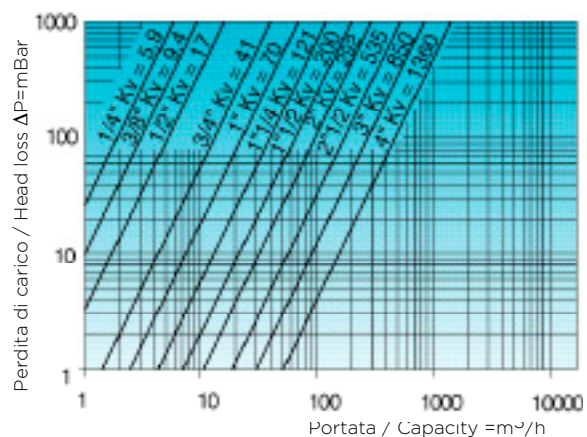


Diagramma perdite di carico
Head loss diagram

Art. S.3227 BASIC

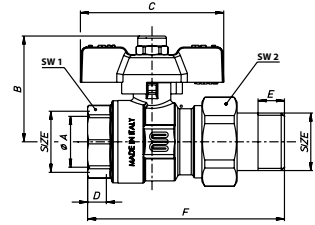
ERL



SIZE	1/2"	3/4"	1"	1 1/4"
A pass./bore	15	20	25	32
B mm	39	48	52	59,5
C mm	52	65	65	
D mm	9,5	11	12,5	13,5
E mm	10	12	14	15
F mm	77	89	110	124,5
SW 1 mm	25	31	38	47
SW 2 mm	31	38	47	52

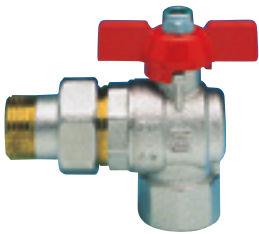
Valvola a sfera per collettori femmina/codola **con sede piana**, farfalla, nichelata.

Ball valve for manifolds female/male with tail and nut, **with flat seat**, T-handle, nickel-plated..



Art. S.0228 BASIC

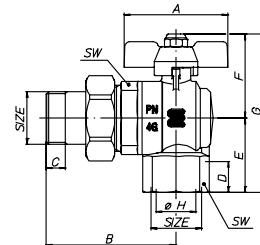
ERL



SIZE	1/2"	3/4"	1"
A mm	52	65	65
B mm	60,5	67,5	78
C mm	10	12	12
D mm	15	16,3	19,1
E mm	33	39	46,5
F mm	40	49	53
G mm	73	88	99,5
øH pass./bore	15	20	25
SW mm	26	32	39

Valvola a sfera a squadra per collettori femmina/codola maschio con farfalla, nichelata.

Angled ball valve for manifolds female/male with tail and nut, whit T-handle, nickel-plated.



Art. S.3208 BASIC

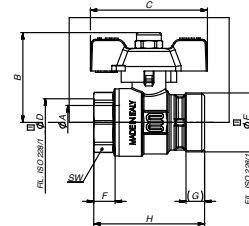
ERL



SIZE	3/4"x1"	1/2"x3/4"
øA mm	20	15
B mm	49	39,5
C mm	65	52
øD mm	3/4"	1/2"
øE mm	1"	3/4"
F mm	11	9,5
G mm	10,8	8,2
H mm	59,5	49,5
SW mm	31	25

Valvola a sfera **per collettore** senza codola e girello **con sede piana** e farfalla azzurra 1"M x 3/4 F.

Ball valve for manifolds without tail and nut with flat gasket and blue T-handle 1"M x 3/4 F.



Art. S.3209 BASIC

ERL



SIZE	3/4"x1"	1/2"x3/4"
øA mm	20	15
B mm	49	39,5
C mm	65	52
øD mm	3/4"	1/2"
øE mm	1"	3/4"
F mm	11	9,5
G mm	10,8	8,2
H mm	59,5	49,5
SW mm	31	25

Valvola a sfera **per collettore** senza codola e girello **con sede piana** e farfalla rossa 1"M x 3/4 F.

Ball valve for manifolds without tail and nut with flat gasket and red T-handle 1"M x 3/4 F.

