



BON•GAS

VALVOLA DIRITTA
STRAIGHT BALL VALVE

RUBINETTO DIRITTO
STRAIGHT BALL COCK

RUBINETTO A SQUADRA
ANGLED BALL COCK

RUBINETTO PER COLLEGAMENTO TUBO FLESSIBILE
BALL COCK FOR FLEXIBLE HOSE



APPROVAZIONI INTERNAZIONALI

Le valvole a sfera **BON•GAS** sono approvate a norma EN 331. Le valvole a sfera **BON•GAS** hanno ottenuto approvazioni ufficiali per l'utilizzo con gas in vari paesi.

INTERNATIONAL APPROVALS

The **BON•GAS** valves are approved to the EN 331 standard.

The **BON•GAS** valves gained official approvals in various countries for use with gas.

FILETTATURE

Estremità filettate UNI EN 10226 (BSPT a richiesta).

END CONNECTIONS

Screwed to UNI EN 10226 (BSPT on request).

IMPIEGHI

Gas combustibili:

- gas di città (1^a famiglia)
- gas metano (2^a famiglia)
- gas liquidi (3^a famiglia)

Le valvole a sfera **BON•GAS** sono anche adatte per l'uso con acqua calda e fredda, aria compressa, olii e idrocarburi in generale.

USES

Fuel gas:

- town gas (1st family)
- natural gas (2nd family)
- L.P.G. gas (3rd family)

The **BON•GAS** ball valves are also suitable for hot and cold water, compressed air, oils and hydrocarbons in general.

PRESSIONE DI ESERCIZIO

Per gas combustibili 5 MOP.

Per altri usi da PN 40 (1/2") a PN 16 (2").

Vedere diagramma pressione/temperatura.

WORKING PRESSURE

For fuel gas 5 MOP.

For other uses from PN 40 (1/2") to PN 16 (size 2").

See pressure/temperature diagram.

LIMITI DI TEMPERATURA

Per gas combustibili da -20°C a +60°C.

Per altri usi da -20°C a +100°C.

Vedere diagramma pressione/temperatura.

TEMPERATURE LIMITS

For fuel gas from -20°C to +60°C.

For other uses from -20°C to +100°C.

See pressure/temperature diagram.

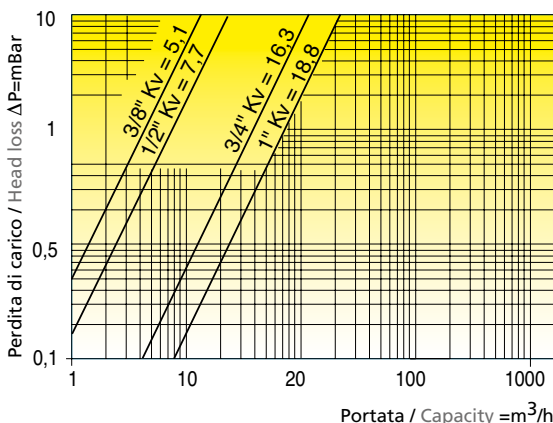
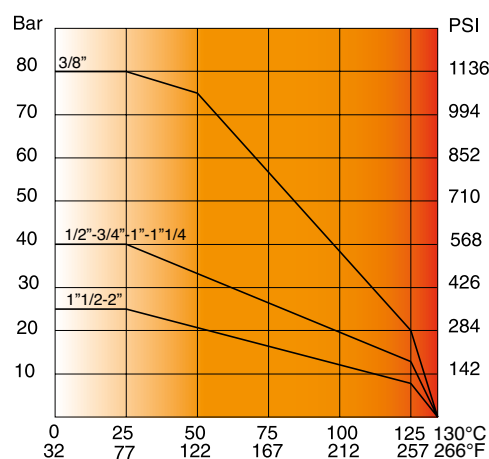


Diagramma pressione/temperatura Art.G0327, G0328, G0329, G0330

(prova eseguita con acqua)
per Art. G0231, G0232, G0237, G0238
fare riferimento al diagramma pressione/
temperatura della serie Atomic pag. 139

*Pressure/temperature diagram Art.G0327,
G0328, G0329, G0330 (tested with water)
for Art. G0231, G0232, G0237, G0238 refer
to pressure/temperature diagram of Atomic
series pag.139*

**Diagramma perdite di carico Art.G0327, G0328,
G0329, G0330 (prova eseguita con aria)**
per Art. G0231, G0232, G0237, G0238
fare riferimento al diagramma perdite di carico
della serie Top Gas pag. 33

*Head loss diagram Art.G0327, G0328, G0329,
G0330 (tested with air)
for Art. G0231, G0232, G0237, G0238 refer to
head loss diagram of Top Gas series pag.33*

BON•GAS

Valvola e rubinetto a sfera per gas combustibili
Ball valve and cock for fuel gas

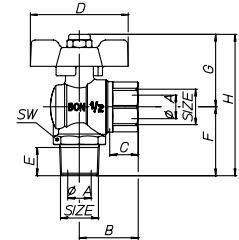
Art. G.0362 BON•FLEX



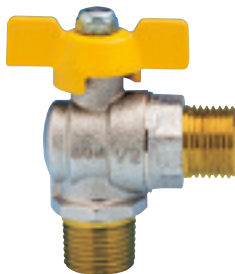
SIZE	1/2" x 1/2"								
øA pass./bore	12,5								
B mm	31								
C mm	15								
D mm	52								
E mm	15								
F mm	36,5								
G mm	38,5								
H mm	75								
SW mm	26								

Rubinetto a sfera per gas combustibili a squadra, maschio/femmina con farfalla, per tubo flessibile, nichelato.

Angled ball cock for fuel gas, male/female, with T-handle for flexible hose, nickel-plated.



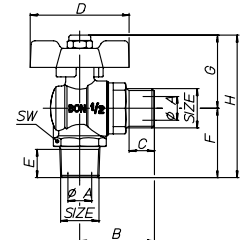
Art. G.0363 BON•FLEX



SIZE	1/2" x 1/2"								
øA pass./bore	12,5								
B mm	39,15								
C mm	13,2								
D mm	52								
E mm	15								
F mm	36,5								
G mm	38,5								
H mm	75								
SW mm	26								

Rubinetto a sfera per gas combustibili a squadra, maschio/maschio con farfalla, per tubo flessibile, nichelato.

Angled ball valve for fuel gas, male/male, with T-handle for flexible hose, nickel-plated.



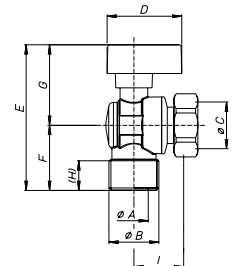
Art. G.0386 BON•GAS



SIZE	1/2" x 1/2"	3/4" x 3/4"							
ø A mm	12,5	15							
øB	1/2"	3/4"							
øC	1/2"	3/4"							
D mm	44	44							
E mm	68,5	74							
F mm	30	34							
G mm	38,5	40							
H mm	12	14,5							
I mm	26	26							

Rubinetto a sfera per gas combustibili a squadra, maschio/girello **per caldaia** con levetta in alluminio plastificata gialla.

Angled ball cock for fuel gas, male/nut for boiler, with yellow plastic coated aluminium lever.



Art. G.0387



SIZE	1/2" x 1/2"	3/4" x 3/4"							
ø A mm	12,5	15							
øB	1/2"	3/4"							
øC	1/2"	3/4"							
D mm	44	44							
E mm	68,5	74							
F mm	30	34							
G mm	38,5	40							
H mm	12	14,5							
I mm	26	26							

Rubinetto a sfera **per acqua** a squadra, maschio/girello **per caldaia**, con levetta in alluminio.

Angled ball cock for water, male/nut for boiler, with black plastic coated aluminium lever.

